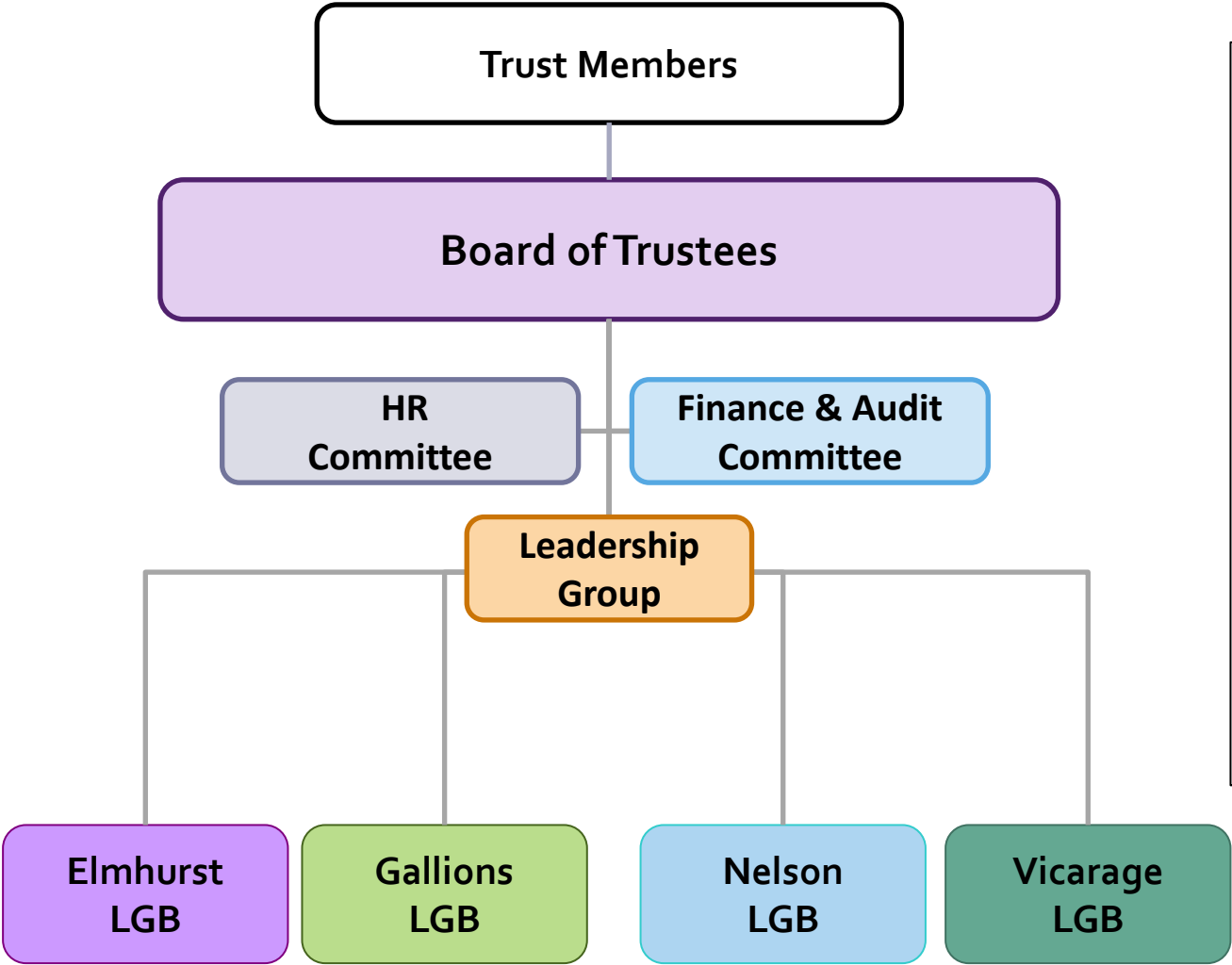


Governance structure

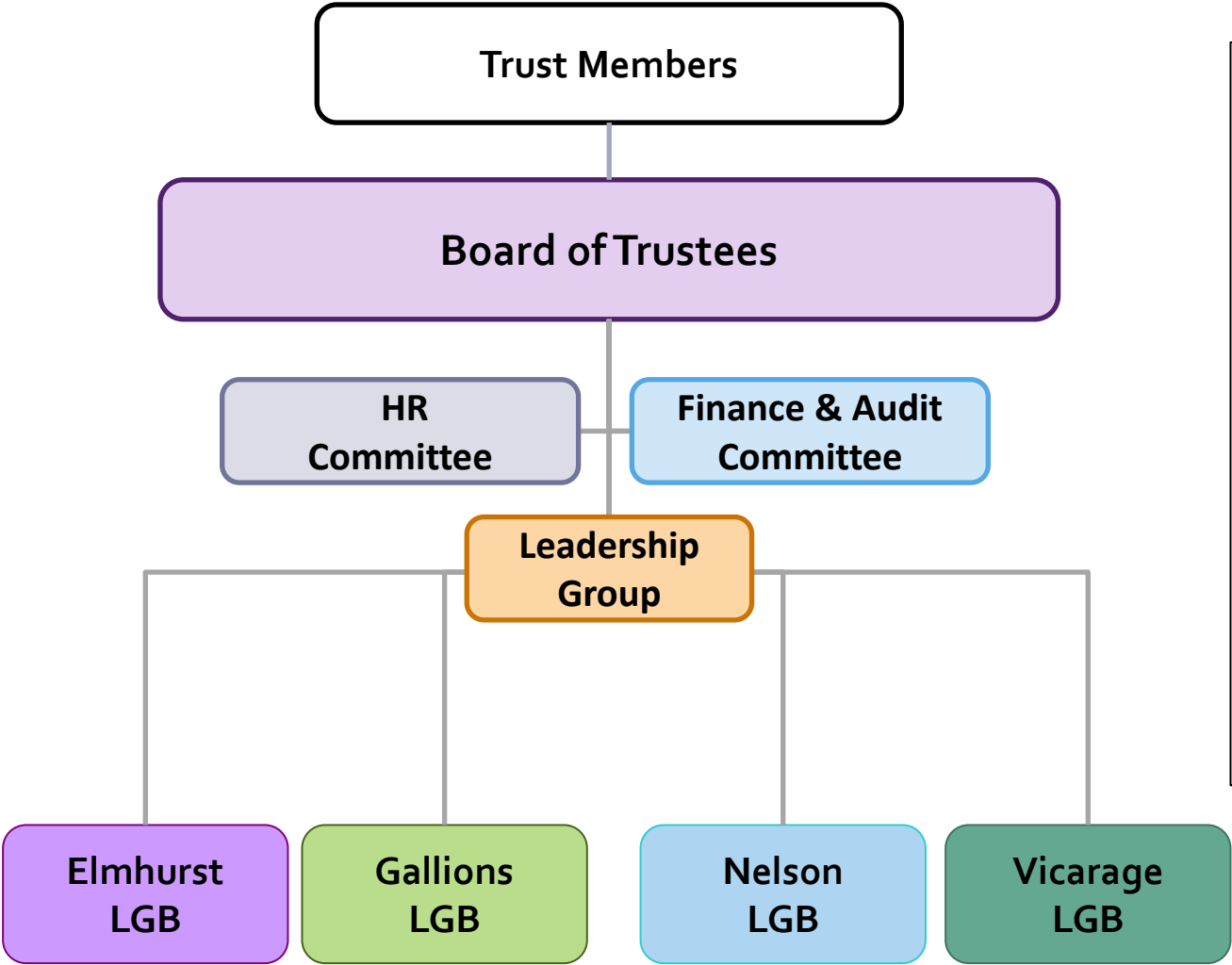


TRUST BOARD

Key Roles:

- Trust strategic direction
- Performance of all school
- Outcomes for all pupils
- Trust and school leadership
- Effectiveness of trust governance especially Local Governing Bodies
- Financial management and compliance
- Staff employment
- Policies and procedures
- Intervention
- Schools estate

Governance structure



LOCAL GOVERNING BODY

Key Roles:

- Support and challenge Head teacher
- School Performance Targets
- School Development Plan
- School Budget
- Staff deployment and management
- Admissions management
- Compliance with Trust regulations, policies and plans
- Interface with parents and community

Trust governance & leadership

- **Trust Members** hold Trustees to account and are the guardians of Trust vision & ethos
- **Board of Trustees** accountable for performance of all schools and pupil outcomes; vast majority chosen from existing governing bodies for their relevant skills / expertise and all schools are currently represented
- **Local Governing Bodies** (LGB) continue to oversee their school.
- **CEO** is accountable to DfE for Trust performance, leads intervention if necessary, chairs the leadership group and also oversees non-education functions of Trust e.g. finance and HR
- Headteachers of each school and CEO form the **Leadership Group**.
- **Headteachers** remain responsible for running their school day-to-day.