

NEWSLETTER



November 2021

Be the best you can be

Positive Behaviour at Vicarage School

At Vicarage school we actively promote positive behaviour and place strong emphasis on strategies which support this to ensure that good behaviour is explicitly encouraged and celebrated.

**Excellence
Resilience
Respect**

We aim;

- To ensure the Positive Behaviour Policy is supported and followed by the whole school community - parents, teachers, pupils and governors.
- To foster a caring, nurturing atmosphere, in which teaching and learning can take place in a safe and happy environment
- To teach moral values and attitudes to promote responsible behaviour, self-discipline, self-respect and respect for others
- To encourage and guide pupils to make the right choices
- To promote responsibility when dealing with school and personal property
- To celebrate good behaviour, by providing a range of rewards for pupils of all ages and abilities.
- To resolve behavioural problems by adopting a restorative justice approach.
- To ensure consistency through the use of the Behaviour Ladder across the school.

Rewards System

- ✓ Consistently give praise and recognise when pupils follow rules, routines and show good learning behavior.
- ✓ Significant achievement stickers (individual)
- ✓ Marbles in the jar (class)- weekly, termly, annual winners
- ✓ Certificates for excellent attendance (100%) at the end of term and academic year
- ✓ Golden table ticket - pupils who show good manners and are well behaved at lunchtimes are chosen by midday assistants to have lunch on the Golden Table on a Friday,
- ✓ Star of the week certificate and a pencil
- ✓ Special Head Teacher/ Deputy Head Teacher stickers
- ✓ Trophy and sticker for best weekly class attendance in each phase

Behaviour Systems

We recognise that there are many reasons why pupils may experience difficulties behaving in an appropriate way. If a pupil is experiencing difficulties, we will always speak to the pupil and their parents to identify the cause and how we can work together to support the pupil.

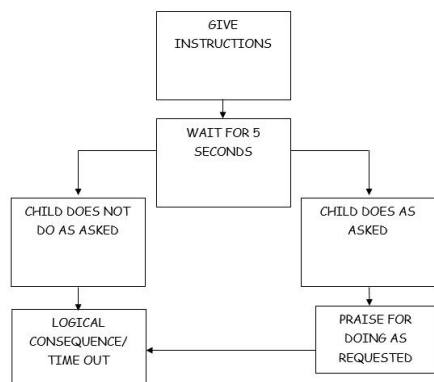
If a pupil chooses to behave in an unacceptable manner, there are clear steps to encourage the child to make the right choice and continue with their learning.

The school will seek advice from other professionals if a pupil displays very challenging behaviour that poses a risk to themselves and others.

NEWSLETTER

November 2021

Be the best you can be



Examples of logical consequences are as follows:

- Time out in class (with timer)
- Time out in a different class (with another adult)
- Apologising
- A conversation with the child
- A conversation with parents
- Fixed term exclusion for serious behaviour incidents



An example of the simplified version of the Behaviour Ladder used in the EYFS.

In the Early Years, the focus is on teaching appropriate behaviour, through the traffic light system.

	Classroom	Playground
	For excellent behaviour, work and demonstrating the school core values: <ul style="list-style-type: none"> • Excellence • Resilience • Respect 	
	All children begin on Yellow	
	First Reminder	
	2 nd Reminder	
Action Required	<ul style="list-style-type: none"> • Clear Verbal Warning • Use refocusing, redirecting, use 'language of choice' or a reminder • Move down to Pink on Ladder 	Informal Warning Level <ul style="list-style-type: none"> • A verbal warning will be given in the first instance of unacceptable behaviour
	3 rd Reminder (In Class Time Out)	
Action Required	<ul style="list-style-type: none"> • The pupil remains in the classroom and is moved away from the main activity for up to 15 minutes in class separation time (In Class Time Out) 	Formal Warning Level (In Playground Time Out) <ul style="list-style-type: none"> • Any repeated misbehaviour will require the pupil to walk around with a member of staff or stand against a wall for five minutes to reflect on their behaviour
	Level 3/Blue Card for Persistent disruptive behaviour	
Action Required	<ul style="list-style-type: none"> • The pupil is sent to another classroom for up to 45 minutes (External Class Time Out) • Completes any work given • Move down to Blue on Ladder 	<ul style="list-style-type: none"> • If negative behaviour persists a blue sanction card should be issued and handed to the Learning Mentor.
	<ul style="list-style-type: none"> • Level 3 Blue Card completed by adult and taken by the child to the... • Next available Lunch Sanction where a... • Reflection sheet is completed. After discussing with child, reflection sheets are kept in the phase folder. • Parents must be informed verbally by the class teacher 	
	<ul style="list-style-type: none"> • The child is moved back to Yellow after a sanction is completed. • They may also move back to Yellow at the beginning of a morning or afternoon session (although incomplete sanctions still need to be completed) 	
	Level 4/Red Card for serious incident	
Action Required	<ul style="list-style-type: none"> • Physically harming another, whether pupil or adult (which requires medical attention) • Causing substantial damage to school property • Refusal to follow reasonable requests with implications for health and safety of the pupil or others e.g. leaving the school premises without permission • Theft of school property or that belonging to a child or staff member • Threatening others verbally or threatening with and /or using an object • Comments that discriminate along the lines of race, gender, religion and sexual orientation • Bringing to school any illegal or prohibited items including a weapon 	
	A Red Card must be completed and handed to the Deputy or Head Teacher. Internal and Fixed Term Exclusions will be considered. Parents are informed.	

In KS1 and KS2 each classroom and group room has a Positive Behaviour Ladder. At the beginning of each session pupils names will be displayed on the Yellow step. Pupil names will be moved up for good or improved behaviour and down the ladder for unacceptable behaviour. The aim is always to look out for and reward positive behaviour throughout the school day.

NEWSLETTER

November 2021

Be the best you can be

Safeguarding

Safeguarding at Vicarage is everyone's responsibility

What is safeguarding?

Safeguarding is the action that is taken to promote the welfare of children and protect them from harm.

Safeguarding means:

- Protecting children from abuse and maltreatment
- Preventing harm to children's health or development
- Ensuring children grow up with the provision of safe and effective care
- Taking action to enable all children and young people have the best outcomes.

Child protection is one part of the safeguarding process. It focuses on protecting individual children identified as suffering or likely to suffer significant harm. This includes child protection procedures which detail how to respond to concerns about a child.

Safeguarding children and child protection applies to all children up to the age of 18.

Keeping your child safe means:

- The health and safety of all children
- Making sure that the adults who work in the school have undergone safety and security checks
- Protecting children from deliberate harm
- Being proactive against any discriminatory behaviour
- Protecting our children from harassment and discrimination;
- A positive approach to behaviour management including the use of physical intervention safely, when necessary
- Meeting the needs of children with medical conditions
- Providing first aid;
- Children enjoying safe educational visits
- Caring for children's personal needs
- Keeping children safe when using the internet
- Making sure our school is secure and safe
- Being a 'listening school'.

Please remember that if you have a **safeguarding concern** regarding your child, or any another child, you can always speak to any member of staff or a member of our school's safeguarding team.



Ms Khan
Head Teacher
Safeguarding Lead



Ms Dennett
Attendance/Early Help Lead
Deputy Safeguarding Lead



Ms Clunis
Assistant Head for Inclusion
Deputy Safeguarding Lead

All of our staff at Vicarage have regular safeguarding training. Safeguarding is also part of our induction programme for new staff

NEWSLETTER



November 2021

Be the best you can be

How are children taught about safeguarding?

At Vicarage we are committed to safeguarding and promoting pupil welfare and British Values, therefore we take every opportunity to embed these into our curriculum through the following:

- Promotion of our school and British values
- Writing of class rules/charters at the start of every year and revisiting them regularly
- Discrete teaching of relevant topics in PSHE, Computing, Science, RE and RSHE.
- Utilising opportunities in other subjects, e.g. exploring characters and themes in Literacy or looking at democracy, beliefs and Rule of Law in different civilisations and cultures through History and Geography topics
- Daily assemblies incorporating school values, British values and safeguarding topics.
- Holding special assemblies celebrating religious festivals
- Holding school events such as Anti-bullying week, Black History Month, Safer Internet day, Road Safety Week and Mental Health Awareness Week
- Providing opportunities to discuss what's going on in school and the wider world, including accessing the news through appropriate channels such as First News and Newsround.
- Holding regular fundraising activities to promote local and global citizenship.
- Class forums to enable pupils to think about safeguarding matters, their own physical and mental wellbeing and the wellbeing of others
- A democratically elected School Council which seeks the views of all pupils to look at issues at school, local and national levels

Here are some National safeguarding support services that you may wish to look at.

Anti-Bullying Campaign www.bullying.co.uk

Child Exploitation & Online Protection (CEOP) www.ceop.gov.uk

Child Accident Prevention Trust (CAPT) www.capt.org.uk

Childline www.childline.org.uk

Gingerbread (practical support for single parents) www.gingerbread.org.uk

Karma Nirvana (supporting victims of honour crimes and forced marriages)

www.karmanirvana.org.uk

National Centre for Eating Disorders www.eating-disorders.org.uk

FRANK – The National Drugs Helpline www.talktofrank.com

NSPCC www.nspcc.org.uk

Private Fostering Campaign www.privatefostering.org.uk

The Samaritans www.samaritans.org.uk

Women's Aid (support for domestic violence victims) www.womensaid.org.uk

Young Minds (children's mental health) www.youngminds.org.uk

Parent Code of Conduct

At Vicarage Primary School we are proud to have supportive and friendly parents.

Our parents recognise that educating children is a process that involves partnership between home and school and understand the importance of a good working relationship to support them and their children. For these reasons we welcome and encourage parents/carers to participate fully in the life of our school.

The purpose of this code of conduct is to provide a reminder to all parents and visitors to our school about expected conduct so that we can work together to ensure a safe and positive school environment for our children.

We ask that parents respect the professional judgements made by staff. Parents who disapprove of professional decisions and school management policies have the choice of either discussing and understanding issues raised or making a complaint following the Complaints Policy. Please note that all emails to the school will be responded to within 48 hours. If you have an urgent matter that requires immediate attention please phone the school office.

Whilst disrespectful behaviour from parents is very rare, we need to have a code of conduct in place to safeguard children and staff. Therefore, we ask that parents give all members of staff the same level of respect as staff give to them.

We expect parents and carers to show respect and concern for others by:

- Supporting the ethos of our school by setting a good example in their own speech and behaviour towards all members of the school community, including staff and other parents;
- Working together with school staff for the benefit of children. This includes approaching the school to resolve any issues of concern and to discuss and clarify specific events in order to bring about a positive solution;
- Correcting own child's behaviour, especially in public where it could otherwise lead to conflict, aggressive or unsafe behaviour for themselves and others;
- Respecting the school environment, including keeping the school tidy by not littering;

NEWSLETTER



November 2021

Be the best you can be

- Following the parking rules and doing the right thing when delivering and collecting children from school. This includes not parking on double yellow lines or other restricted parking areas;
- Bringing children to school on time and collecting them on time at the end of the school day.
- Wearing appropriate clothing when on the school premises.

In order to support a peaceful and safe school environment, the school cannot tolerate:-

- Disruptive behaviour which interferes with the operation of a classroom, an office area or any other part of the school grounds;
- Using loud and/or offensive language;
- The use of verbal aggression or threatening harm to another adult or child. This includes physical punishment against your own child on school premises. (Some actions may constitute an assault with legal consequences);
- Damaging or destroying school property;
- Sending abusive or threatening emails, phone or social media messages;
- Smoking, consumption of illegal substances or accessing the school site whilst intoxicated.

Any unacceptable behaviour on school premises will be reported to the appropriate authorities, and the school may prohibit an offending adult from entering the school grounds to safeguard our school community.

We hope you will support us with this code of conduct and ensure we continue to have a strong and positive working relationship throughout the time your child is with us at Vicarage Primary School.

NEWSLETTER

November 2021



Be the best you can be

Additional School Closure day

In June 2022, Her Majesty the Queen will become the first British Monarch to celebrate a Platinum Jubilee (70 years of service) having acceded to the throne in February 1952. Schools have been given an additional day of closure to mark this special occasion.

Please note

School will be closed on Monday 6th June.

Pupils will return to school on Tuesday 7th June following the half term break

Dates for your diary

Week beginning 29th November - Last week of after school clubs for Autumn Term

Friday 10th December - Christmas Jumper Day

Wednesday 15th December- Christmas lunch

Monday 20th December - Class Parties / Non-uniform day

Tuesday 21st December - Class Carol Services / Last day of term

Wednesday 22nd December - Tuesday 4th January - Christmas Holiday (school closed)

Wednesday 5th January 2022- All pupils return to school / First day of Spring Term

Ms S Khan
Head Teacher



Twitter

Be the first to hear the news!

Follow on Twitter:

Twitter@SchoolVicarage